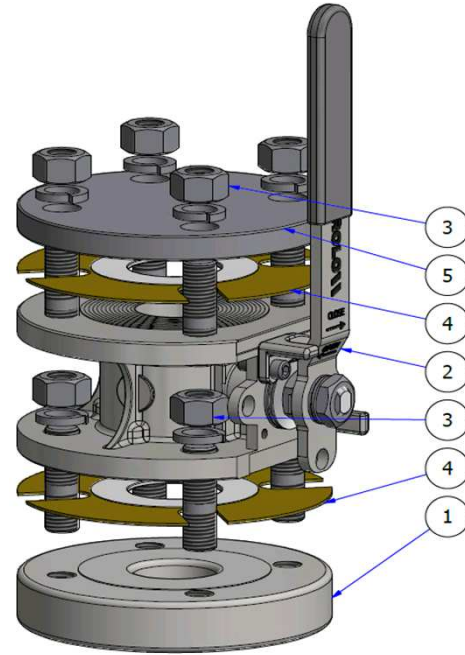
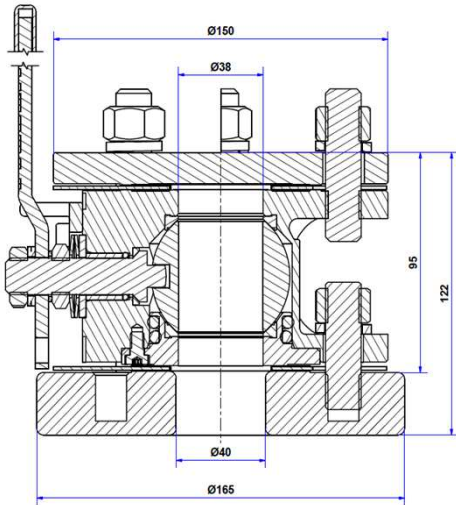


INSTALLATION

1. Check Inlet (tank side) flange is clean, free from dirt and grit.
2. Screw the studs into the weldin flange, lubricate with PTFE added grease before installing the studs
3. Place the gasket
4. Install the valve on the flange, secure with washer and nuts (refer to PWAGEN001 fort bolt tightening sequence)
5. Tighten the nuts torque : 40 N.m +/- 5
6. Install gasket, bolting kit and blind flange on the valve outlet flange (refer to PWAGEN001 fort bolt tightening sequence)
7. Open and close the valve 3 times to check the operationnal torque.



ITEM	DESCRIPTION	SPECIFICATION	PART N°
5	Blind flange	ext ø 150mm, thickness 13.5mm 4 x Ø18x110 PCD 316L stainless steel	11 95 87 00 00
3	Bolting Kit	4 x M16 36/28 studs 4 x nuts and 4 x washers	11 12 69 91 00
4	Gasket	ext Ø 150mm, int Ø 45mm, 4x slotted Ø19x minimum 101,4 PCD, CNAF/PTFE	12 91 90 00 00
2	ND 40 ATCO	PN 16 Full Bore, 316 L stainless steel Inlet flange 4xØ17x125PCD Outlet flange 4xM16x110PCD	AFN4X 16T1200000
3	Bolting Kit	4 x M16 36/28 studs 4 x nuts and 4 x washers	11 12 69 91 00
4	Gasket	ext Ø 150mm, int Ø 45mm, 4x slotted Ø19x minimum 101,4 PCD, CNAF/PTFE	12 91 90 00 00
1	Weld-in flange	ext ø 150mm, int Ø 40mm thickness 27mm 4 x M16 x 110PCD 316L stainless steel	11 96 63 00 00

if a piping system linked to the tank is installed on the process side of the valve, we recommend to have a flexible hose in-between the valve and the piping system to avoid any additional stress on the fastening studs