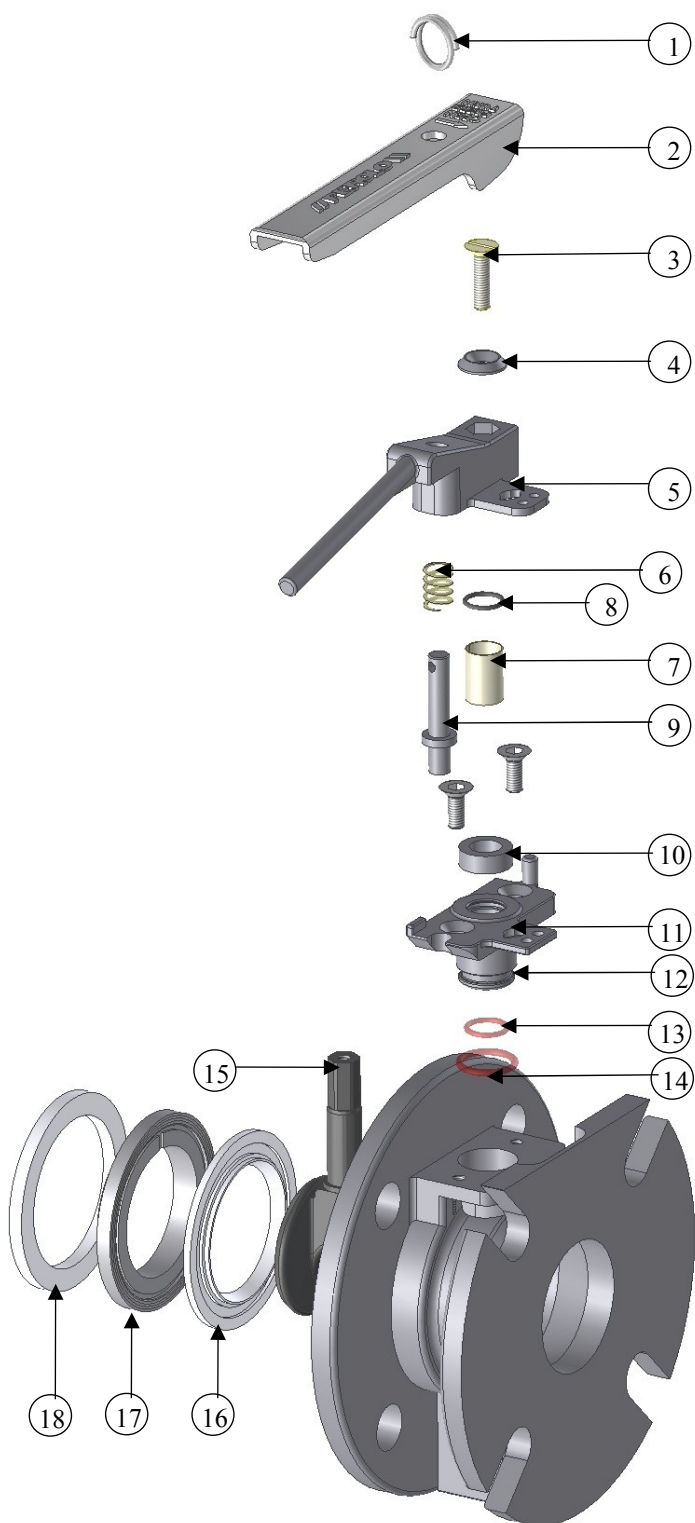


## 2" TANKFLY™ Flanged

Series TF4X Air inlet butterfly valves

### Maintenance



N°	Description	Part#
1	Ring kit (Stainless Steel)	11 12 03 97 00
<b>Handle kit including :</b>		
1	Ring (Stainless Steel)	
2	Handle (Stainless Steel)	
3	Screw M6-25 (Stainless Steel)	
4	Washer (Stainless Steel)	11 12 04 98 00
5	Handle bracket (Stainless Steel)	
6	Spring (Stainless Steel)	
7	Spacer (PTFE/Stainless Steel)	
9	Latch (Stainless Steel)	
<b>Sleeve clamp kit including :</b>		
8	O'ring (Fluorocarbon)	
10	Sleeve (Stainless Steel)	
11	Bearing (Stainless Steel)	11 12 03 92 00
12	O'ring (Viton)	
13	O'ring (FEP encapsulated Silicone)	
14	O'ring (FEP encapsulated Silicone)	
<b>Closure Plate kit including :</b>		
15	Closure Plate (Stainless Steel)	11 12 03 93 00
<b>Plate seal kit including :</b>		
16	Closure Plate seal (PTFE)	11 12 04 95 00
17	Seal ring (Stainless Steel)	
18	Lower seal (PTFE)	
<b>PTFE seal kit including :</b>		
16	Closure Plate seal (PTFE)	11 12 04 99 00
18	Lower seal (PTFE)	
<b>Gauze kit including :</b>		
	Gauze filter S.A. (Stainless Steel)	11 12 03 94 00
	Ring (Stainless Steel)	
<b>Tool kit including :</b>		
A	Special tool for sleeve installation	11 12 03 98 00