

## 2" (ND50) ATCO™ Full Bore PN16 Ball Valve - AFN5X

### INSTALLATION

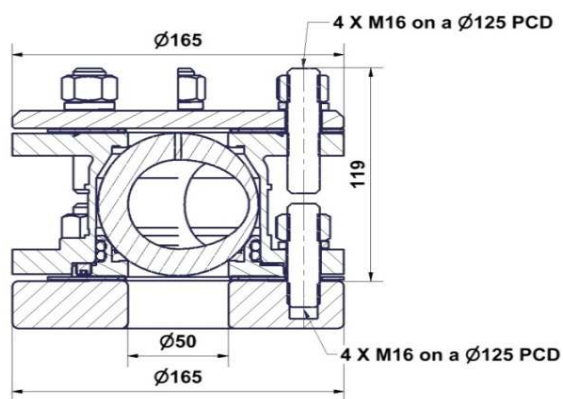
#### Assembly

To install the ND50 ATCO™ on a weld in flange:

1. Screw the studs from kit 11 91 13 91 00 on the weld in flange (1).
2. Place the gasket (2) on top of the weld in flange.
3. Fit ball valve and secure with washers and nuts.

The required tightening torque is 5 daN.m.

4. Assemble the outlet flange gasket and blind flange and secure using bolting kit 17.12.12.91.00.



| Item | Description          | Specification   | Part n°         |
|------|----------------------|---|-----------------|
| 1    | Weld-in flange       | ext $\varnothing$ 165mm, int $\varnothing$ 50mm<br>thickness 21mm<br>4xM16x125PCD<br>316L stainless steel           | 11.90.25.00.00  |
| 2    | Gasket               | ext $\varnothing$ 165mm, int $\varnothing$ 50mm<br>4x $\varnothing$ 18x minimum 125PCD<br>CNAF/PTFE - thickness 2mm | 11.90.29.00.00  |
| 3    | Bolting Kit          | 4 x M16 33 studs<br>4 x M16 nuts and 4 x grower washers   | 11.91.13.91.00  |
| 4    | ND50 ATCO Ball Valve | PN 16 Full Bore, 316 L stainless steel<br>Inlet flange 4x $\varnothing$ 17x125PCD<br>Outlet flange 4xM16x125PCD     | AFN5X16T1200000 |
| 5    | Blind flange         | ext $\varnothing$ 165mm, thickness 13.5mm<br>4x $\varnothing$ 18x1125PCD<br>316L stainless steel                    | 11.95.88.00.00  |
| 6    | Bolting Kit          | 4 x studs M16-50 studs<br>4 xH in M16 nuts and 4 x grower washers   | 17.12.12.91.00  |

